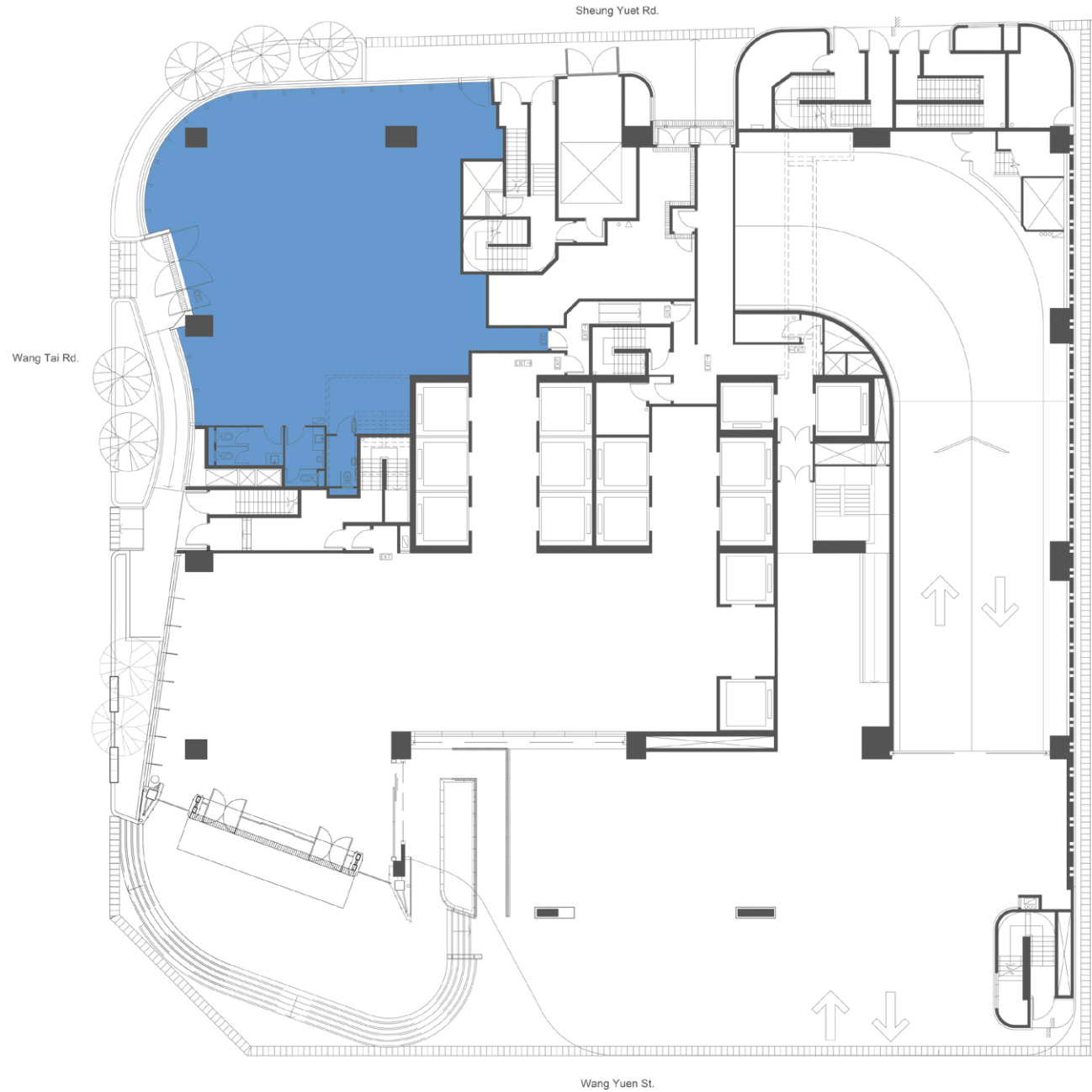


HONG KONG PACIFIC TOWER

GROUND FLOOR PLAN



Floor Loading: 5 kPa
Electricity Loading: TPN 160 A
HVAC: Chiller Water Supply
Floor Height (Slab to Slab): 5 m
Floor Usage: Retail, Showroom
GFA: 4,083 ft²

FOR LEASING INQUIRIES
LEASING@HKPI.COM.HK
+852 8201 1081

18 SHEUNG YUET ROAD, KOWLOON BAY,
KOWLOON, HONG KONG

HONG KONG PACIFIC TOWER

FIRST FLOOR PLAN



Floor Loading: 4 kPa+1
Electricity Loading: TPN 300 A
HVAC: Chiller Water Supply
Floor Height (Slab to Slab): 5 m
Floor Usage: Restaurant, Retail
Automated Openable Window: 8

Shop 1 GFA: 5,572 ft²
Shop 2 GFA: 4,948 ft²
Shop 3 GFA: 5,572 ft²

FOR LEASING INQUIRIES
LEASING@HKPI.COM.HK
+852 8201 1081

18 SHEUNG YUET ROAD, KOWLOON BAY,
KOWLOON, HONG KONG